

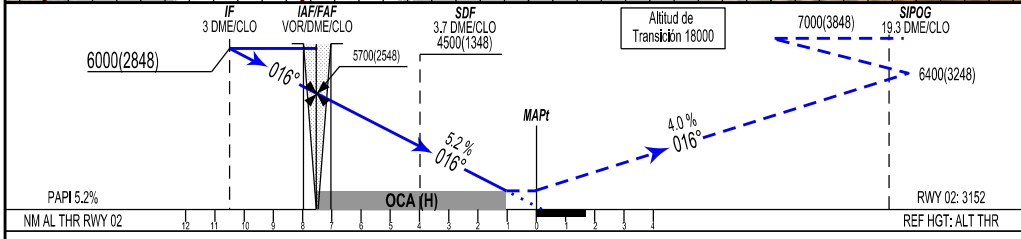
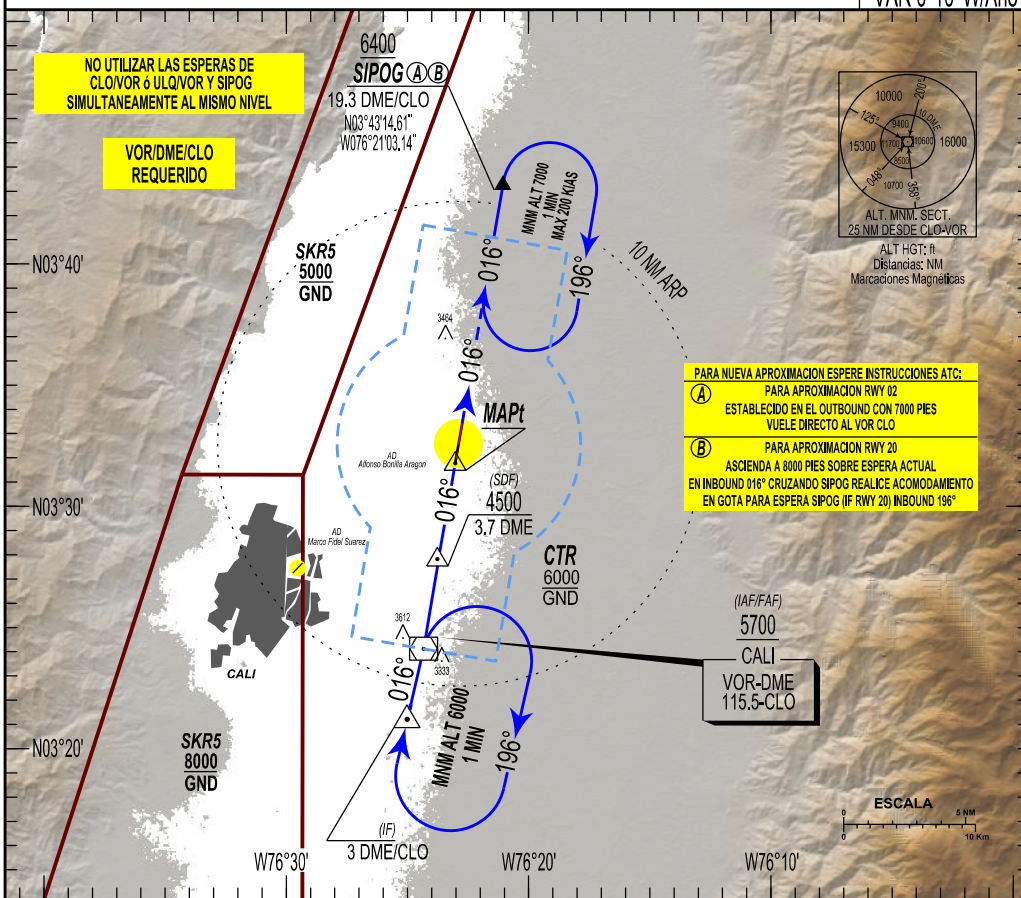
IAC

APROXIMACION POR INSTRUMENTOS OACI
ICAO INSTRUMENT APPROACH
CAT: A/B/C/D
ELEV. AD: 3162, THR 02: 3152

CALI
ALFONSO BONILLA ARAGON
VOR RWY 02

APP: CALI Aproximación / Approach 119.1 MHz. GND: Alfonso Bonilla Aragón 121.9 MHz.
TWR: ALFONSO BONILLA ARAGÓN Torre / Tower 118.1 MHz.

DECL/CLO
6° W/21
VAR 0°10' W/Año



APP FRUSTRADA: RUMBO DE PISTA 016° HACIA SIPOG, SUBA EN LA ESPERA DE SIPOG PARA 7000 FT. PDG MIN 4.0% HASTA 6400 FT

MISSED APPROACH: RUNWAY HEADING 016° TO SIPOG, CLIMBING TO 7000 FT ON SIPOG AND HOLD. MIN PDG 4.0% UNTIL 6400 FT

| C A T A B C D | DIRECTO OCA(H): 3600(448) | | DIRECTO NO CDFA OCA(H): 3600(448) | | CIRCULAR CIRCLING | | MNM AD: Distancias verticales en pies y VIS en metros, Vertical distances in ft and VIS in meters. | | | | | | | | | | | | |
|-------------------------------------|------------------------------|---------|--------------------------------------|---------|----------------------|-------------|---|------|------|------|------|---------------------------------|----|------|------|------|------|------|------|
| | FULL | ALS OUT | FULL | ALS OUT | OCA (ft) | VISIBILIDAD | FAF A MAPt 7.7 NM | | | | | ALTITUD VS. DISTANCIA DME / CLO | | | | | | | |
| | 1400 | 1500 | 1600 | 2300 | 3770 (608) | 2400 | GS | 90 | 110 | 130 | 150 | 180 | NM | 1 | 2 | 3 | 4 | 5 | 6 |
| | | 2100 | 1800 | 2500 | 3970 (608) | 3800 | ft/min | 5:08 | 4:12 | 3:33 | 3:05 | 2:34 | ft | 5359 | 5043 | 4727 | 4411 | 4095 | 3779 |